



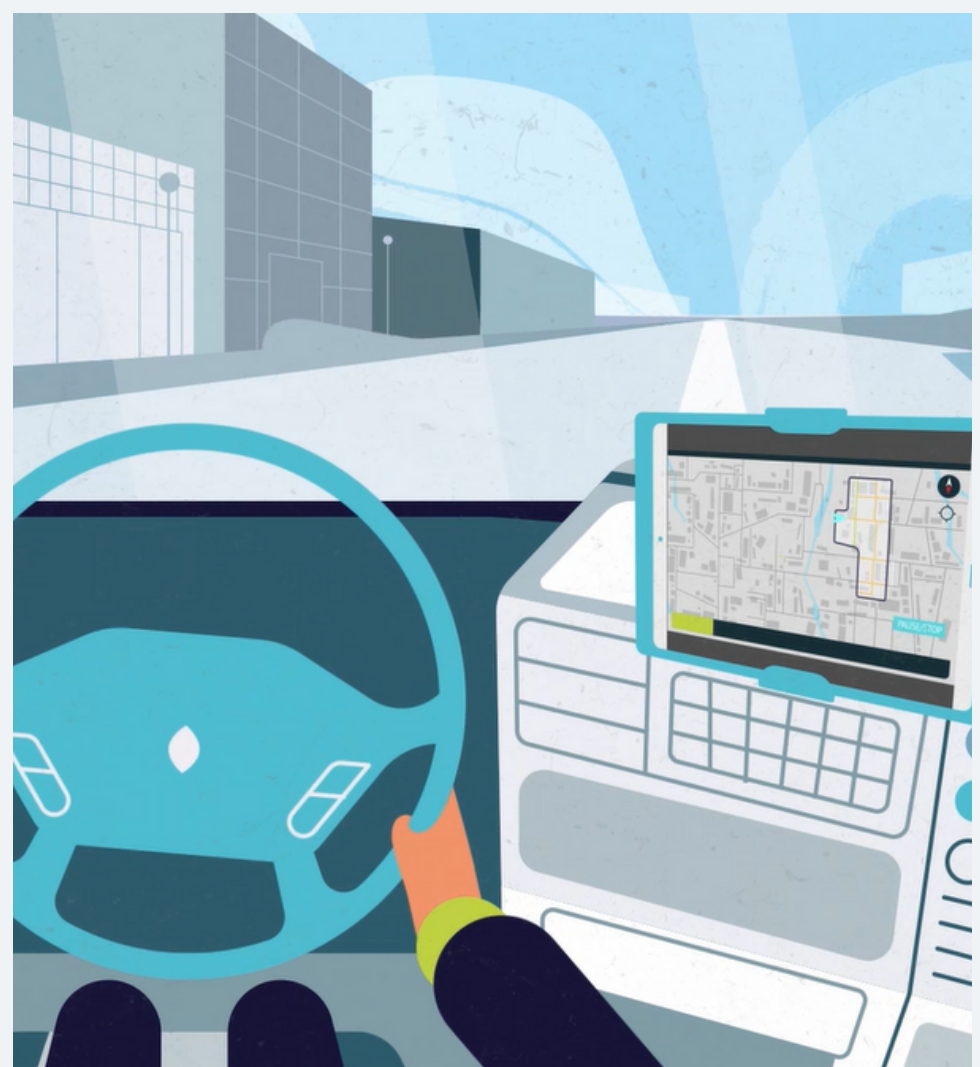
Jewel Waste Collection

The power of people in combination with technology is crucial to meet the challenges and successfully tackle the world of collection. That's why Jewel builds up its products from practice. Jewel Waste Collection gives drivers insight and control over work carried out by the waste collection vehicle. In addition, Jewel Waste Collection supports team collaboration so that rides are completed together, making the step to involve the people inside. Planners and team leaders are supported to help their teams excel.

Jewel Waste Collection capitalises on the interplay between the people in the vehicles and the office. The team keeps in touch via apps on a tablet and a browser link, so there is far less paper use. Does your organisation also use Jewel Work preparation? You can use the data from this as the base for Jewel Collection.

Digital map

The app shows the driver all information about the collection area. The basis for this is the roads where waste bins are located. The moment a street has been collected, it changes colour. In addition, additional information is available, such as the location of bins, waste management centre locations and whether there are any notifications. Information that is shared during the start of the day can also be given as a briefing. This means that drivers have continuous insight into their progress and can also see where colleagues are active.



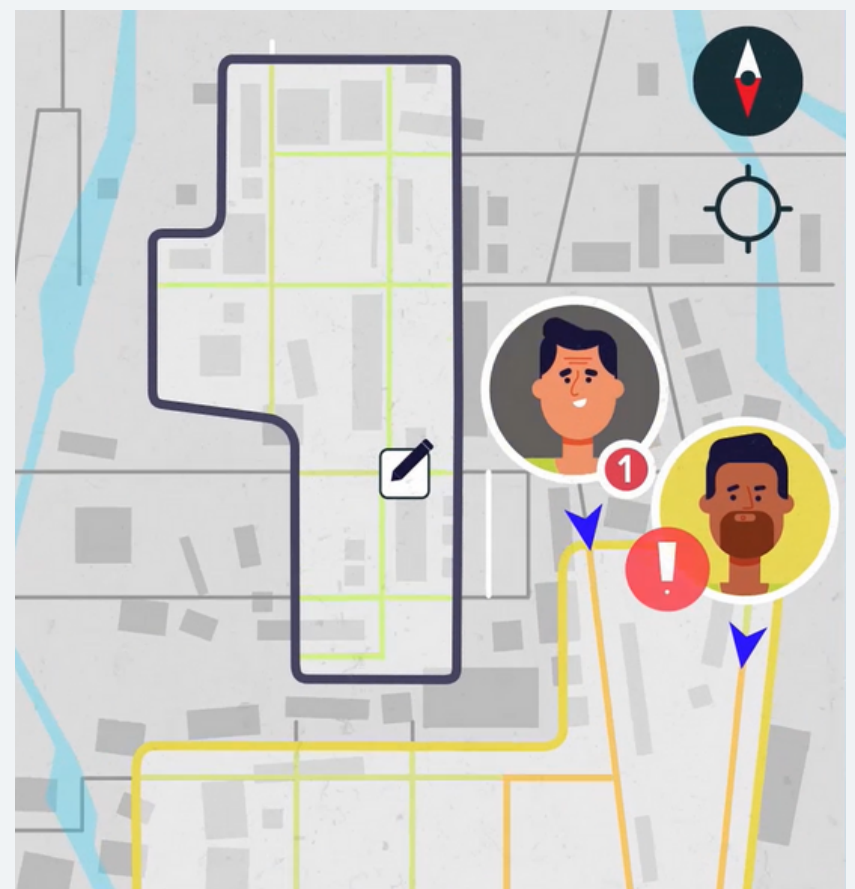


Checking own work

Each driver determines the route through the area and sees which streets have already been completed. It is easy to respond to situations from daily practice. Before the ride is complete, it shows where the collection took place. Have you forgotten a street? You can quickly rectify the omission.

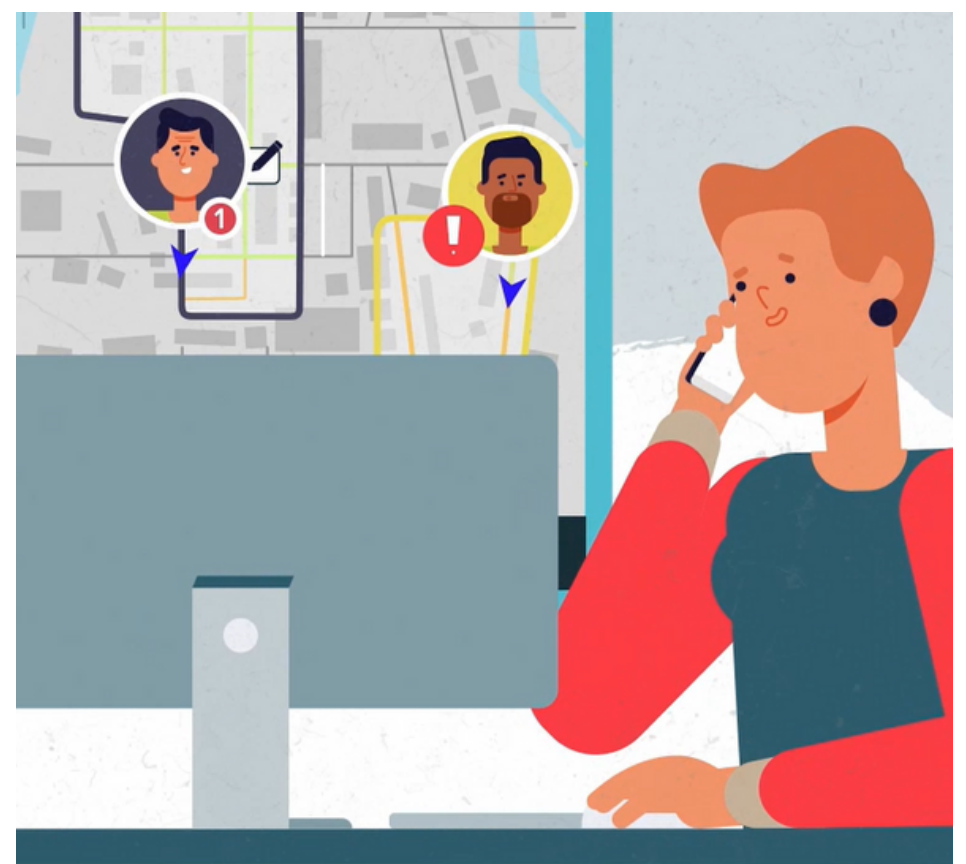
Collaboration

Collaboration within the team is essential when collecting. You can respond to issues in different ways. Sometimes it is enough to share information; this can be done quickly via notifications. In other cases, you want to help each other get the job done. For example, Jewel Waste Collection allows multiple drivers to complete an area together, making issues easier to deal with as they arise. For planning, this offers opportunities to accommodate the change of seasons, for example, smoothly.



Insight

Working together to get the job done. That's what we support with Jewel Waste Collection. Information must be available to all team members. Drivers see each other on the map, and the team's progress is also visible inside. With practical experience, the planner can provide even better guidance. The information about the implementation is made available to the work planner, who can make adjustments accordingly.



Find out more

ocijffers@jewel.eu | +31 6 19003934